



APPLICATIONS AND PRODUCTS

PUMP REPAIRS



www.weicon.com

The use of protective WEICON ceramic coatings on pumps provides major advantages, such as increased wear and corrosion resistance, improved efficiency, a longer service life and a significant reduction in maintenance costs. Thanks to these benefits, WEICON ceramic coatings offer a valuable solution for the protection of pumps in various industrial applications, ensuring reliable and efficient operation while contributing to overall cost savings and sustainability.

Enhanced Wear & Abrasion Resistance

The ceramic fillers in WEICON ceramic coatings provide a hard, wear-resistant surface that protects pump components from abrasion caused by fine particles in the pumped fluids.

Corrosion & Chemical Resistance

The coating forms a protective barrier against corrosive substances, extending the life of pumps that are operated in aggressive chemical environments. It is effective in protecting against various types of chemical corrosion, including acidic and alkaline media.

Improved Efficiency

The ceramic coating creates a smooth surface that reduces friction and turbulence within the pump. This improvement in fluid dynamics can enhance the pump's efficiency, leading to lower energy consumption and better performance.

Extended Service Life

By protecting critical components from wear and corrosion, the coating significantly increases durability and extends the service life of pumps. Reduced frequency of maintenance and replacements results in lower overall operational costs.

Reduced Maintenance Costs

The increased resistance to wear and corrosion means that pumps require less frequent repairs and maintenance. This minimizes downtime, which is particularly beneficial in critical applications where continuous operation is essential.

Versatility

Suitable for a wide range of applications, WEICON ceramic coatings can be used on various types of pumps, including centrifugal, split casing, diaphragm and gear pumps. WEICON ceramic coatings are successfully used in many different industries, such as wastewater treatment, chemical processing, mining and oil & gas.

Easy Application

WEICON ceramic coatings are user-friendly and can be easily applied with basic tools after sandblasting. These protective coatings cure at ambient temperatures, simplifying the application process and eliminating the need for special equipment.

High Temperature Resistance

Ceramic coatings provide thermal stability and can resist high temperatures, making them suitable for pumps used in elevated temperature environments where other conventional coatings may fail.

Improved Reliability

The enhanced protection ensures that pumps operate reliably over longer periods, reducing the risk of unexpected failures. Consistent performance is crucial in maintaining the efficiency and safety of industrial processes.

Environmental Benefits

Extending the service life of pumps and reducing the need for frequent replacements contribute to sustainability efforts by minimizing waste. Improved energy efficiency owing to reduced friction and wear can lead to lower carbon emissions.

Inner coating of pumps



Description:

- ▶ Pre-treatment with sandblasting
- ▶ Cleaning with WEICON Cleaner Spray S
- ▶ Repairing the cavitation and corrosion damages with WEICON HB 300
- ▶ Final coating as wear protection with WEICON Ceramic BL



Cleaner Spray S

- ▶ 500 ml
- ▶ 10000147



WEICON HB 300

- ▶ 0.2 kg 10004472
- ▶ 0.5 kg 10001084
- ▶ 1.0 kg 10000099



WEICON Ceramic BL

- ▶ 0.2 kg 10054394
- ▶ 0.5 kg 10000093
- ▶ 2.0 kg 10005233

Advantage of our solution:

- ▶ repairing worn pumps
- ▶ additional protection for new pumps
- ▶ cost-effective repair and long service life

Repair of a pump used in wastewater disposal



Description:

- ▶ Clean with WEICON Cleaner Spray S
- ▶ Sandblast and clean again with WEICON Cleaner Spray S
- ▶ Apply WEICON HB 300 for the build-up and WEICON Ceramic HC 220 for the final coating



Cleaner Spray S

- ▶ 500 ml
10000147



WEICON Ceramic HC 220

- ▶ 0.2 kg
10060702
- ▶ 0.5 kg
10060705
- ▶ 2.0 kg
10060707



WEICON HB 300

- ▶ 0.2 kg
10004472
- ▶ 0.5 kg
10001084
- ▶ 1.0 kg
10000099

Advantages of our solution:

- ▶ fast, low-cost and long-term repair

Restoration work on a large submersible pump



Description:

- ▶ Heavily eroded cast iron on pump
- ▶ Clean with WEICON Cleaner Spray S
- ▶ Apply WEICON Rust Converter
- ▶ Correct the largest damages with WEICON A
- ▶ After curing, coat with WEICON HB 300
- ▶ After curing of WEICON HB 300, coat with WEICON GL and finally with WEICON Ceramic BL
- ▶ The different colours of the two wear protection systems make wear of the coating clearly visible



Rust Converter

▶ 400 ml
10047458



WEICON A

▶ 0.2 kg ▶ 0.5 kg ▶ 2.0 kg
10054381 10000003 10000006



Cleaner Spray S

▶ 500 ml
10000147



WEICON HB 300

▶ 0.2 kg ▶ 0.5 kg ▶ 1.0 kg
10004472 10001084 10000099



WEICON GL

▶ 0.2 kg ▶ 0.5 kg ▶ 1.0 kg
10057791 10057714 10057800



WEICON Ceramic BL

▶ 0.2 kg ▶ 0.5 kg ▶ 2.0 kg
10054394 10000093 10005233

Advantages of our solution:

- ▶ function of the pump restored
- ▶ no new purchase necessary

Maintenance of a pump



Description:

- ▶ Cleaning with WEICON Cleaner Spray S
- ▶ Filling and levelling the irregularities with WEICON HB 300
- ▶ Final coating of the pump with WEICON Ceramic BL to protect against further damage



WEICON HB 300

- ▶ 0.2 kg 10004472
- ▶ 0.5 kg 10001084
- ▶ 1.0 kg 10000099



WEICON Ceramic BL

- ▶ 0.2 kg 10054394
- ▶ 0.5 kg 10000093
- ▶ 2.0 kg 10005233



Cleaner Spray S

- ▶ 500 ml 10000147

Advantage of our solution:

- ▶ cost-effective repair compared to a replacement
- ▶ preventing a long downtime
- ▶ very good abrasion and wear resistance
- ▶ high resistance to substances

Maintenance of a pump



Description:

- ▶ Sandblasting and subsequent cleaning with WEICON Cleaner Spray S
- ▶ Patching of damaged areas by rebuilding with WEICON HB 300
- ▶ Grinding and cleaning with Cleaner Spray S
- ▶ First application of a control coat with WEICON GL
- ▶ Final coat application with WEICON Ceramic BL



WEICON HB 300

- ▶ 0.2 kg 10004472
- ▶ 0.5 kg 10001084
- ▶ 1.0 kg 10000099



Cleaner Spray S

- ▶ 500 ml 10000147



WEICON GL

- ▶ 0.2 kg 10057791
- ▶ 0.5 kg 10057714
- ▶ 1.0 kg 10057800



WEICON Ceramic BL

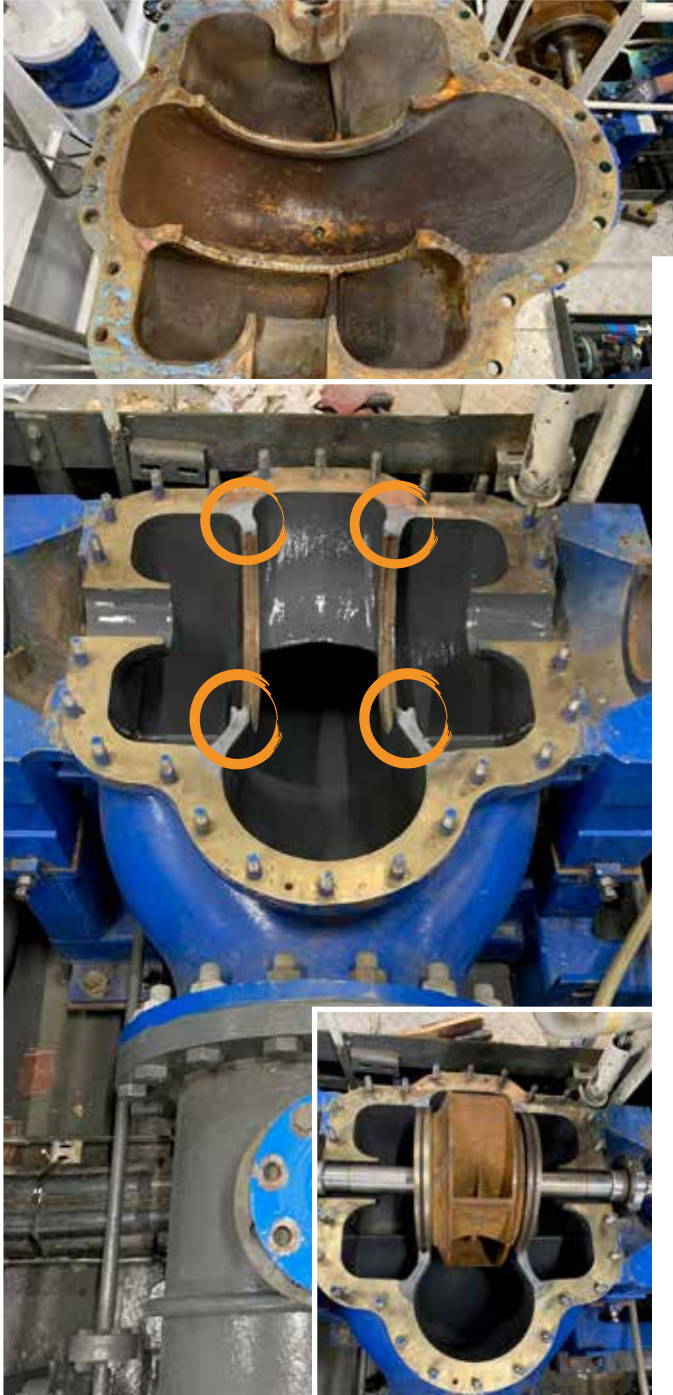
- ▶ 0.2 kg 10054394
- ▶ 0.5 kg 10000093
- ▶ 2.0 kg 10005233

Advantages of our solution:

- ▶ restoration of their functionality
- ▶ extension of service life
- ▶ avoidance of an expensive new purchase



Coating of jet pumps for sand backfill



Description:

- ▶ Two jet pumps were coated with the epoxy resin system WEICON Ceramic HC 220
- ▶ The pumps are used to build artificial islands in the sea
- ▶ At the beginning, the contours were restored with Plastic Metal WEICON WR2



WEICON Ceramic HC 220

- ▶ 0.2 kg 10060702
- ▶ 0.5 kg 10060705
- ▶ 2.0 kg 10060707



Cleaner Spray S

- ▶ 500 ml 10000147



WEICON WR2

- ▶ 0.2 kg 10054401
- ▶ 0.5 kg 10000087
- ▶ 2.0 kg 10000088

Advantage of our solution:

- ▶ increasing the conveyor rate
- ▶ short downtime and fast recommissioning
- ▶ very cost-effective repair and maintenance
- ▶ durable wear protection
- ▶ long service life despite sand-water mixture

Repair of sewage pipes



Description:

- ▶ Repair of one of the return pipes of the sewage treatment basin was required
- ▶ The area of damage was located in the pumping station
- ▶ The diameter of the pipeline is 600/800 mm
- ▶ Over the years holes from 1 mm to approx. 15 mm have been formed due to corrosion
- ▶ The repair took five hours



WEICON Pipe Repair-Kit



5/15

▶ 5 cm x 1.5 m
10055737
white

5/35

▶ 5 cm x 3.5 m
10055738
white

10/35

▶ 10 cm x 3.5 m
10055740
white

12/100

▶ 12 cm x 10 m
10058306
white

Cleaner Spray S

▶ 500 ml
10000147

Repair Stick Copper

▶ 57 g ▶ 115 g
10010227 10006609



Advantages of our solution:

- ▶ dismantling of the pipe was not necessary for the repair
- ▶ the pipe could be put back into operation after around 24 hours



WEICON A

▶ 0.2 kg ▶ 0.5 kg ▶ 2.0 kg
10054381 10000003 10000006

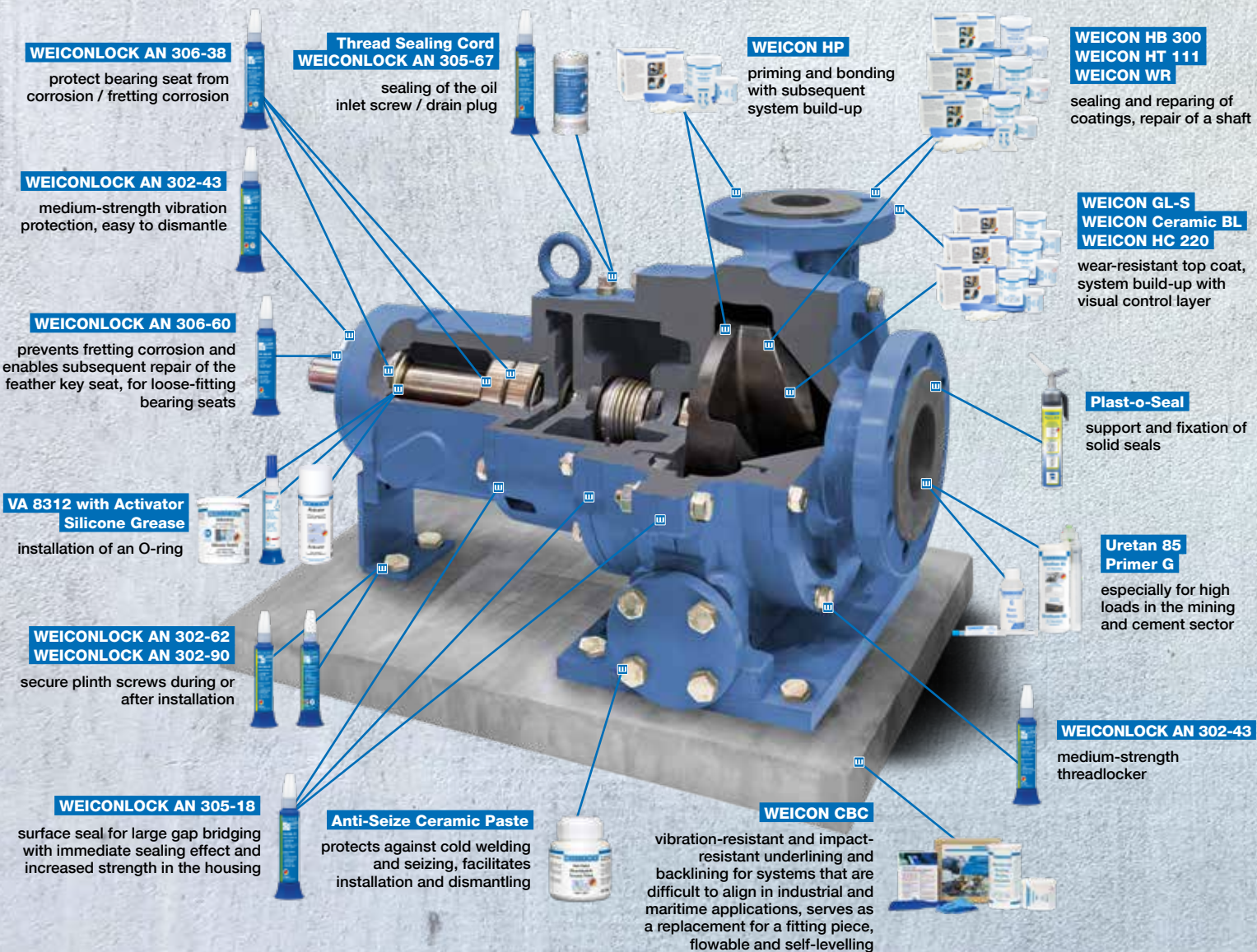


WEICON Ceramic BL

▶ 0.2 kg ▶ 0.5 kg ▶ 2.0 kg
10054394 10000093 10005233

REPAIR OF A CENTRIFUGAL PUMP

- ▶ fast and durable repairs
- ▶ bonding
- ▶ coating
- ▶ gap compensation and filling



WEICONLOCK AN 306-38
protect bearing seat from corrosion / fretting corrosion

Thread Sealing Cord
WEICONLOCK AN 305-67
sealing of the oil inlet screw / drain plug

WEICON HP
priming and bonding with subsequent system build-up

WEICON HB 300
WEICON HT 111
WEICON WR
sealing and repairing of coatings, repair of a shaft

WEICONLOCK AN 302-43
medium-strength vibration protection, easy to dismantle

WEICON GL-S
WEICON Ceramic BL
WEICON HC 220
wear-resistant top coat, system build-up with visual control layer

WEICONLOCK AN 306-60
prevents fretting corrosion and enables subsequent repair of the feather key seat, for loose-fitting bearing seats

Plast-o-Seal
support and fixation of solid seals

VA 8312 with Activator
Silicone Grease
installation of an O-ring

Uretan 85
Primer G
especially for high loads in the mining and cement sector

WEICONLOCK AN 302-62
WEICONLOCK AN 302-90
secure plinth screws during or after installation

WEICONLOCK AN 302-43
medium-strength threadlocker

WEICONLOCK AN 305-18
surface seal for large gap bridging with immediate sealing effect and increased strength in the housing

Anti-Seize Ceramic Paste
protects against cold welding and seizing, facilitates installation and dismantling

WEICON CBC
vibration-resistant and impact-resistant underlining and backlining for systems that are difficult to align in industrial and maritime applications, serves as a replacement for a fitting piece, flowable and self-levelling

PRODUCT OVERVIEW

Name	Art-Nr.	Content
AN 302-43	10030474	10 ml
	10016419	20 ml
	10017876	50 ml
	10019968	200 ml
AN 302-62	10019899	20 ml
	10017881	50 ml
	10019976	200 ml
AN 302-90	10019905	20 ml
	10017891	50 ml
	10019993	200 ml
AN 305-18	10019941	50 ml
	10019999	200 ml
	10019591	300 ml
AN 305-67	10032101	50 ml
	10033883	200 ml
AN 306-38	10030478	10 ml
	10016443	20 ml
	10017888	50 ml
	10020027	200 ml
AN 306-60	10019955	50 ml
	10020040	200 ml
	10034150	300 ml
Plast-o-Seal®	10014387	90 g Tube
	10014388	120 g Brush top can
	10039427	230 g Presspack
	10014389	300 g Cartridge
Thread Sealing Cord*	10026655	175 m plastic can
VA 8312	10018863	12 g P
	10016432	30 g P
	10019793	60 g P
	10000242	500 g F
CA-Activator	10000282	150 ml
Cleaner Spray S	10000147	500 ml
Rust Converter	10047458	400 ml
Repair Stick Copper	10010227	57 g
Pipe Repair-Kit	10006609	115 g
	5/15 5 cm x 1.5 m	10055737 white
	5/35 5 cm x 3.5 m	10067737 black
	10/35 10 cm x 3.5 m	10055738 white
		10067741 black
	12/100 12 cm x 10 m	10055740 white
	10067743 black	
	10057026	white

Name	Art-Nr.	Content
WEICON Ceramic BL**	10054394	0.2 kg
	10000093	0.5 kg
	10005233	2.0 kg
WEICON Ceramic HC 220**	10060702	0.2 kg
	10060705	0.5 kg
	10060707	2.0 kg
WEICON A	10054381	0.2 kg
	10000003	0.5 kg
	10000006	2.0 kg
WEICON GL	10060361	0.2 kg
	10057714	0.5 kg
WEICON GL-S	10057800	1.0 kg
	10057791	0.2 kg
	10060362	0.5 kg
WEICON HP	10060363	2.0 kg
	10054393	0.2 kg
	10054003	0.5 kg
WEICON HB 300	10054004	2.0 kg
	10004472	0.2 kg
	10001084	0.5 kg
WEICON HT 111	10000099	1.0 kg
	10062982	0.2 kg
	10062984	0.5 kg
WEICON WR	10062985	1.0 kg
	10054400	0.2 kg
	10000077	0.5 kg
WEICON WR2	10000078	2.0 kg
	10054401	0.2 kg
	10000087	0.5 kg
WEICON CBC	10000088	2.0 kg
	10045020	3.0 kg
	10045019	10.0 kg
Urethane 85 (Shore-hardness A 85)	10057130	500 g
	10057188	540 g
Primer G	10057199	50 g
Anti-Seize Ceramic Paste	10067867	120 g Brush top can
	10067869	450 g Can
	10000208	1.0 kg Can
Silicone Grease*	10053151	5 g Tube
	10050566	85 g Tube
	10050558	450 g Can
	10050563	1.0 kg Can
	10051113	5.0 kg Bucket
	10051118	25.0 kg Bucket

* BAM tested and safety-related evaluated according to leaflet M 034-1 "List of nonmetallic materials compatible with oxygen" (DGUV information 213-075) of BG RCI

** drinking water approval according to BS 6920

**WEICON GmbH & Co. KG
(Headquarters)**

Königsberger Str. 255 · DE-48157 Münster
P.O. Box 84 60 · DE-48045 Münster
Germany
phone +49 (0) 251 9322 0
WhatsApp + 49 (0) 251 9322 393
info@weicon.de

WEICON Production GmbH

Vogelsrather Weg 25 · DE-41366 Schwalmtal
Germany
phone +49 (0) 251 9322 500
production@weicon.de

WEICON Middle East L.L.C.

Jebel Ali Ind Area 1
P.O. Box 118 216 · Dubai
United Arab Emirates
phone +971 4 880 25 05
info@weicon.ae

WEICON Inc.

20 Steckle Place · Unit 20
Kitchener · Ontario N2E 2C3 · Canada
phone +1 877 620 8889
info@weicon.ca

WEICON Kimya Sanayi Tic. Ltd. Şti.

Orhan Gazi Mahallesi 16. Yol Sokak No: 6
34538 Hadimköy-Esenyurt · Istanbul
Türkiye
phone +90 (0) 212 465 33 65
info@weicon.com.tr

WEICON Romania SRL

Str. Podului Nr. 1
547176 Budiu Mic (Targu Mures) · Romania
phone +40 (0) 3 65 730 763
office@weicon.com

WEICON SA (Pty) Ltd

Unit No. D1 · Enterprise Village
Capricorn Drive · Capricorn Park
Muizenberg 7945 (Cape Town) · South Africa
phone +27 (0) 21 709 0088
info@weicon.co.za

WEICON South East Asia Pte Ltd

7 Soon Lee Street
#01-11 iSPACE · Singapore 627608
Phone (+65) 6710 7671
info@weicon.com.sg

WEICON Czech Republic s.r.o.

Teplická 305
CZ-417 61 Teplice-Bystřany
Česká republika
phone +42 (0) 417 533 013
info@weicon.cz

WEICON Ibérica S.L.

Av. de Somosierra 18, Nave 6
San Sebastián de los Reyes
28703 Madrid · Spain
phone +34 (0) 914 7997 34
info@weicon.es

WEICON Italia S.r.L.

Via Gelasio Adamoli, 35
16141 Genova · Italy
phone +39 010 2924 871
info@weicon.it

WEICON Colombia S.A.S

Calle 19, 43b-64
Medellín · Colombia
phone +57 310 837 37 99
info@weicon.co

www.weicon.com



**WhatsApp-
Service**



Management
System
ISO 9001:2015
ISO 14001:2015

www.tuv.com
ID 10108636595



**WEICON
APPLICATIONS
AND PRODUCTS
PUMP REPAIRS**

Art.-No. 10101069

Distributed by:

Any product specifications and recommendations given hereby must not be seen as guaranteed product characteristics. They are based on our laboratory tests and on practical experience. Since individual application conditions are beyond our knowledge, control and responsibility, this information is provided without any obligation. We do guarantee the continuously high quality of our products. However, own adequate laboratory and practical tests to find out if the product in question meets the requested properties are recommended. A claim cannot be derived from them. The user bears the only responsibility for non-appropriate or other than specified applications.